

CHILD PROTECTION POLICY (SAFEGUARDING)

CONTENTS

Codicil Insert

Part 1: Safeguarding Policy

1. Introduction
2. Overall aims
3. Key Principles
4. Key Processes
5. Expectations
6. The Designated Safeguarding Lead
7. The Academy Association
8. A Safer School Culture
 - 8.1 Safer recruitment and selection
 - 8.4 Staff support
9. Our Role in the Prevention of Abuse
 - 9.2 The curriculum
 - 9.4 Other areas of work
10. Safeguarding Students who are Vulnerable to Extremism
 - 10.6 Risk reduction
 - 10.8 Response
11. Safeguarding Students who are Vulnerable to Exploitation, Forced Marriage, Female Genital Mutilation or Trafficking
12. What We Do when we are Concerned

Part 2: The Key Procedures

13. Chart: Responding to concerns about a child
14. Involving Parents / Carers
15. Multi-Agency Work
16. Our Role in Supporting Children
17. Responding to an Allegation about a Member of Staff
18. Children with Additional Needs
19. Children in Specific Circumstances

Appendices

Appendix 1: Definitions and Indicators of Abuse

1. Neglect
2. Physical Abuse
3. Sexual Abuse
4. Sexual Exploitation
5. Emotional Abuse
6. Responses from Parents
7. Disabled Children

Appendix 2: Dealing with a disclosure of abuse

Appendix 3: Allegations about a Member of Staff, Associate or Volunteer

Appendix 4: Indicators of Vulnerability to Radicalisation

Appendix 5: Preventing Violent Extremism – Roles and Responsibilities of the Single Point of Contact (SPOC)

APPROVED BY ACADEMY ASSOCIATION:	27/01/16	EFFECTIVE FROM:	28/01/16	NEXT REVIEW:	28/01/17
----------------------------------	----------	-----------------	----------	--------------	----------

MODEL SAFEGUARDING POLICY FOR SCHOOLS AND EDUCATION SERVICES

Codicil Insert RECENT CHANGES TO THIS POLICY

This policy was reviewed and ratified by the Academy Association on Wednesday, 27th January 2016

The following persons are authorised to approve minor changes between reviews:

Chair of Academy Association: Mr Neil Philpott

Safeguarding Lead Associate: Mrs Janet Shaw

Since ratification by the Governing Body the following changes have been made –

Date of Change: September 2015		
Paragraph Number	Previous Wording	New Wording
20.1 – 20.4	None	<p>Private Fostering</p> <p>20.1 Many people find themselves looking after someone else's child without realising that they may be involved in private fostering. A private fostering arrangement is one that is made privately (that is to say without the involvement of a local authority) for the care of a child under the age of 16 (under 18, if disabled) by someone other than a parent or immediate relative. If the arrangement is to last, or has lasted, for 28 days or more it is private fostering.</p> <p>20.2 The Children Act 1989 defines a relative as a grandparent, brother, sister, uncle or aunt (whether of full blood or half blood or by marriage or civil partnership), or a step parent.</p> <p>20.3 People become involved in private fostering for all kinds of reasons. Examples of private fostering include</p> <p>20.3.1 Children who need alternative care because of parental illness;</p> <p>20.3.2 Children whose parents cannot care for them because their work or study involves long or antisocial hours;</p> <p>20.3.3 Children sent from abroad to stay with another family, usually to improve their educational opportunities;</p> <p>20.3.4 Unaccompanied asylum seeking and refugee children;</p> <p>20.3.5 Teenagers who stay with friends (or other non-relatives)</p>

APPROVED BY ACADEMY ASSOCIATION:	27/01/16	EFFECTIVE FROM:	28/01/16	NEXT REVIEW:	28/01/17
----------------------------------	----------	-----------------	----------	--------------	----------

		<p>because they have fallen out with their parents;</p> <p>20.3.6 Children staying with families while attending a school away from their home area.</p> <p>20.4 There is a mandatory duty on the carer, the parents, and anyone else involved in making the arrangement, to inform the local authority of a private fostering. The local authority has a duty to check that the young person is being properly cared for and that the arrangement is satisfactory.</p>
--	--	---

Date of Change: November 2015		
Paragraph Number	Previous Wording	New Wording
Introduction	None	This model policy will be reviewed regularly and may be revised and updated. For this reason we suggest that Governing Bodies review and formally approve their policy annually, and authorise appropriate persons (for example the Chair of the Governing Body and the Safeguarding Lead Governor) to accept updates in matters of detail between reviews, and to inform staff of these changes. The details of these changes should be listed in the codicil insert.

Please now read the policy with this amended wording in place.

PART ONE: SAFEGUARDING POLICY

1. INTRODUCTION

1.1. Safeguarding is defined as:

- 1.1.1. Protecting children from maltreatment;
- 1.1.2. Preventing impairment of children's health or development;
- 1.1.3. Ensuring that children are growing up in circumstances consistent with the provision of safe and effective care; and
- 1.1.4. Taking action to enable all children to have the best life chances.

1.2. Fairfax is committed to safeguarding and promoting the welfare of all its students. We believe that:

- 1.2.1. All children/young people have the right to be protected from harm;
- 1.2.2. All children /young people need to be safe and to feel safe in school;
- 1.2.3. All children /young people need support which matches their individual needs, including those who may have experienced abuse;
- 1.2.4. All children/young people have the right to speak freely and voice their values and beliefs;
- 1.2.5. All children/young people must be encouraged to respect each other's values and support each other;
- 1.2.6. All children/young people have the right to be supported to meet their emotional, and social needs as well as their educational needs – a happy healthy sociable child/young person will achieve more educationally;
- 1.2.7. Schools can and do contribute to the prevention of abuse, victimisation, bullying, exploitation, extreme behaviours, discriminatory views and risk-taking behaviours; and
- 1.2.8. All staff and visitors have an important role to play in safeguarding children and protecting them from abuse.

1.3. Fairfax will fulfil their local and national responsibilities as laid out in the following documents:

- 1.3.1. Working Together to Safeguard Children (DfE 2015)
- 1.3.2. Keeping Children Safe in Education: Statutory guidance for schools and colleges (DfE July 2015)
- 1.3.3. The Procedures of Birmingham Safeguarding Children Board
- 1.3.4. The Children Act 1989
- 1.3.5. The Education Act 2002 s175 / s157
- 1.3.6. Mental Health and Behaviour in Schools: Departmental Advice (DfE 2014)

2. OVERALL AIMS

2.1. This policy will contribute to safeguarding our students and promoting their welfare by:

- 2.1.1. Clarifying standards of behaviour for staff and students;
- 2.1.2. Contributing to the establishment of a safe, resilient and robust ethos in the academy, built on mutual respect, and shared values;
- 2.1.3. Introducing appropriate work within the curriculum;
- 2.1.4. Encouraging students and parents to participate;

APPROVED BY ACADEMY ASSOCIATION:	27/01/16	EFFECTIVE FROM:	28/01/16	NEXT REVIEW:	28/01/17
----------------------------------	----------	-----------------	----------	--------------	----------

- 2.1.5.Alerting staff to the signs and indicators that all might not be well;
- 2.1.6.Developing staff awareness of the causes of abuse;
- 2.1.7.Developing staff's awareness of the risks and vulnerabilities their students face;
- 2.1.8.Addressing concerns at the earliest possible stage; and
- 2.1.9.Reducing the potential risks students face of being exposed to violence, extremism, exploitation, or victimisation.

2.2.This policy will contribute to supporting our students by:

- 2.2.1.Identifying and protecting the most vulnerable;
- 2.2.2.Identifying individual needs where possible; and
- 2.2.3.Designing plans to meet those needs.

2.3.This policy will contribute to the protection of our students by:

- 2.3.1.Implementing child protection policies and procedures; and
- 2.3.2.Working in partnership with students, parents and agencies.

3. KEY PRINCIPLES

3.1.These are the key principles of safeguarding, as stated by Birmingham Safeguarding Children Board:

- 3.1.1.Always see the child first.
- 3.1.2.Never do nothing.
- 3.1.3.Do with, not to, others.
- 3.1.4.Do the simple things better.
- 3.1.5.Have conversations, build relationships.
- 3.1.6.Outcomes not outputs.

3.2.In addition the Board has identified the following key safeguarding messages for schools.

- 3.2.1.Every child is entitled to a rich and rounded curriculum.
- 3.2.2.Schools operate with public money: this should be spent wisely, targeting resources on the evidenced needs of children at school now. Assurance and audit are important aspects of this.
- 3.2.3.Governance is corporate and decisions are collective, but individual associates can and should take the lead on specific aspects of academy life such as safeguarding.
- 3.2.4.When issues arise, head teachers should speak out, addressing them internally where possible and escalating them when this is unsuccessful.

4. KEY PROCESSES

4.1.All staff should be aware of the guidance issued by Birmingham Safeguarding Children Board in [Right Services Right Time](#), and [Early Help](#)

5. EXPECTATIONS

5.1.All staff and visitors will:

- 5.1.1.Be familiar with this safeguarding policy;

APPROVED BY ACADEMY ASSOCIATION:	27/01/16	EFFECTIVE FROM:	28/01/16	NEXT REVIEW:	28/01/17
----------------------------------	----------	-----------------	----------	--------------	----------

- 5.1.2. Be subject to Safer Recruitment processes and checks, whether they are new staff, supply staff, contractors, volunteers etc.
- 5.1.3. Be involved in the implementation of individual education programmes, integrated support plans, child in need plans and interagency child protection plans;
- 5.1.4. Be alert to signs and indicators of possible abuse (See Appendix One for current definitions and indicators);
- 5.1.5. Record concerns and give the record to the Designated Safeguarding Lead Mrs Sue Mulhern;
- 5.1.6. Deal with a disclosure of abuse from a child in line with the guidance in Appendix Two - you must inform the Designated Safeguarding Lead immediately, and provide a written account as soon as possible.

5.2. All staff will receive basic level one training at least once every three years. Key staff will undertake level two and level three training as agreed by the Academy Association.

6. THE DESIGNATED SAFEGUARDING LEAD

- 6.1. Our Designated Safeguarding Lead on the senior leadership team is Mrs Sue Mulhern. She has lead responsibility and management oversight and accountability for child protection and, with the Head of Academy, will be responsible for coordinating all child protection activity.
- 6.2. The Designated Safeguarding Lead will lead regular case monitoring reviews of vulnerable children. These reviews must be evidenced by minutes and recorded in case files.
- 6.3. When the academy has concerns about a child, the Designated Safeguarding Lead will decide what steps should be taken and should advise the Head of Academy.
- 6.4. Child protection information will be dealt with in a confidential manner. Staff will be informed of relevant details only when the Designated Safeguarding Lead feels their having knowledge of a situation will improve their ability to deal with an individual child and / or family. A written record will be made of what information has been shared with whom, and when.
- 6.5. Child protection records will be stored securely in a central place separate from academic records. Individual files will be kept for each child: the academy will not keep family files. Files will be kept for at least the period during which the child is attending the academy, and beyond that in line with current data legislation and guidance.
- 6.6. Access to these records by staff other than by the Designated Safeguarding Lead will be restricted, and a written record will be kept of who has had access to them, when and why.
- 6.7. Parents will be aware of information held on their children and kept up to date regarding any concerns or developments by the appropriate members of staff. General communication with parents will be in line with any home academy policies and give due regard to which adults have parental responsibility.

APPROVED BY ACADEMY ASSOCIATION:	27/01/16	EFFECTIVE FROM:	28/01/16	NEXT REVIEW:	28/01/17
----------------------------------	----------	-----------------	----------	--------------	----------

- 6.8. Do not disclose to a parent any information held on a child if this would put the child at risk of significant harm.
- 6.9. If a student moves from our academy, child protection records will be forwarded on to the Designated Safeguarding Lead at the new school, with due regard to their confidential nature and in line with current government guidance on the transfer of such records. Direct contact between the two schools may be necessary, especially on transfer from primary to secondary schools. We will record where and to whom the records have been passed and the date.
- 6.10. If sending by post student records will be sent by "Special/Recorded Delivery". For audit purposes a note of all student records transferred or received should be kept in either paper or electronic format. This will include the child's name, date of birth, where and to whom the records have been sent and the date sent and/or received.
- 6.11. If a student is permanently excluded and moves to a Student Referral Unit, child protection records will be forwarded on to the relevant organisation.
- 6.12. Where a vulnerable young person is moving to a Further Education establishment, consideration should be given to the student's wishes and feelings on their child protection information being passed on in order that the FE establishment can provide appropriate support.
- 6.13. When a Designated Safeguarding Lead resigns their post or no longer has child protection responsibility, there should be a full face to face handover/exchange of information with the new post holder.
- 6.14. In exceptional circumstances when a face to face handover is unfeasible, the Head of Academy will ensure that the new post holder is fully conversant with all procedures and case files.

7. THE ACADEMY ASSOCIATION

- 7.1. The Academy Association are the accountable body for ensuring the safety of the academy.
- 7.2. The Academy Association will ensure that:
- 7.2.1. The Academy has a safeguarding policy in accordance with the procedures of Birmingham Safeguarding Children Board;
 - 7.2.2. The academy operates, "safer recruitment" procedures and ensures that appropriate checks are carried out on all new staff and relevant volunteers;
 - 7.2.3. At least one senior member of the academy's leadership team acts as a Designated Safeguarding Lead;
 - 7.2.4. The Designated Safeguarding Lead attends appropriate refresher training every two years;

APPROVED BY ACADEMY ASSOCIATION:	27/01/16	EFFECTIVE FROM:	28/01/16	NEXT REVIEW:	28/01/17
----------------------------------	----------	-----------------	----------	--------------	----------

- 7.2.5.The Head of Academy and all other staff who work with children undertake training at three yearly intervals;
- 7.2.6.Temporary staff and volunteers are made aware of the academy's arrangements for child protection and their responsibilities;
- 7.2.7.The academy remedies any deficiencies or weaknesses brought to its attention without delay; and
- 7.2.8.The academy has procedures for dealing with allegations of abuse against staff/volunteers.

7.3.The Academy Association reviews its policies/procedures annually.

7.4.The Nominated Associate for child protection at the academy is Mrs Janet Shaw. The Nominated Associate is responsible for liaising with the Head of Academy and Designated Safeguarding Lead over all matters regarding child protection issues. The role is strategic rather than operational – they will not be involved in concerns about individual students.

7.5.The Nominated Associate will liaise with the Head of Academy and the Designated Safeguarding Lead to produce an annual report for Academy Associates and the local authority (s175/s157).

7.6.A member of the Academy Association (usually the Chair) is nominated to be responsible for liaising with the local authority and other partner agencies in the event of allegations of abuse being made against the Head of Academy.

8. A SAFER SCHOOL CULTURE

8.1.Safer Recruitment and Selection

8.1.1.The academy pays full regard to 'Keeping Children Safe in Education' (DfES 2015). Safer recruitment practice includes scrutinising applicants, verifying identity and academic or vocational qualifications, obtaining professional and character references, checking previous employment history and ensuring that a candidate has the health and physical capacity for the job. It also includes undertaking interviews and undertaking appropriate checks through the Disclosure and Barring Service (DBS).

8.1.2.All recruitment materials will include reference to the academy's commitment to safeguarding and promoting the wellbeing of students.

8.1.3.Mrs Jenny Piper (HR Manager), Mrs Deborah Bunn (Head of Academy), Mrs Rachel Boyce (Deputy Headteacher) and Mr Tim Johnson (Deputy Headteacher) have undertaken CWDC/NCSL Safer Recruitment training. One of the above will be involved in all staff / volunteer recruitment processes and sit on the recruitment panel.

8.2.Staff support

8.2.1.We recognise the stressful and traumatic nature of child protection work. We will support staff by providing an opportunity to talk through their anxieties with the Designated Safeguarding Lead and to seek further support as appropriate.

9. OUR ROLE IN THE PREVENTION OF ABUSE

APPROVED BY ACADEMY ASSOCIATION:	27/01/16	EFFECTIVE FROM:	28/01/16	NEXT REVIEW:	28/01/17
----------------------------------	----------	-----------------	----------	--------------	----------

We will provide opportunities for students to develop skills, concepts, attitudes and knowledge that promote their safety and well-being.

9.1. The curriculum

9.1.1. Relevant issues will be addressed through the PSHE curriculum, for example self-esteem, emotional literacy, assertiveness, power, sex and relationship education, e-safety and bullying.

9.1.2. Relevant issues will be addressed through other areas of the curriculum, for example, circle time, English, History, Drama, Art.

9.2. Other areas of work

9.2.1. All our policies which address issues of power and potential harm, for example bullying, equal opportunities, handling, positive behaviour, will be linked to ensure a whole academy approach.

9.2.2. Our safeguarding policy cannot be separated from the general ethos of the academy, which should ensure that students are treated with respect and dignity, taught to treat each other with respect, feel safe, have a voice, and are listened to.

10. SAFEGUARDING STUDENTS WHO ARE VULNERABLE TO EXTREMISM

10.1. Since 2010, when the Government published the Prevent Strategy, there has been an awareness of the specific need to safeguard children, young people and families from violent extremism. There have been several occasions both locally and nationally in which extremist groups have attempted to radicalise vulnerable children and young people to hold extreme views including views justifying political, religious, sexist or racist violence, or to steer them into a rigid and narrow ideology that is intolerant of diversity and leaves them vulnerable to future radicalisation

10.2. Fairfax values freedom of speech and the expression of beliefs / ideology as fundamental rights underpinning our society's values. Both students and teachers have the right to speak freely and voice their opinions. However, freedom comes with responsibility and free speech that is designed to manipulate the vulnerable or that leads to violence and harm of others goes against the moral principles in which freedom of speech is valued. Free speech is not an unqualified privilege; it is subject to laws and policies governing equality, human rights, community safety and community cohesion.

10.3. The current threat from terrorism in the United Kingdom may include the exploitation of vulnerable people, to involve them in terrorism or in activity in support of terrorism. The normalisation of extreme views may also make children and young people vulnerable to future manipulation and exploitation. Fairfax is clear that this exploitation and radicalisation should be viewed as a safeguarding concern.

10.4. Definitions of radicalisation and extremism, and indicators of vulnerability to radicalisation are in Appendix Four.

APPROVED BY ACADEMY ASSOCIATION:	27/01/16	EFFECTIVE FROM:	28/01/16	NEXT REVIEW:	28/01/17
----------------------------------	----------	-----------------	----------	--------------	----------

- 10.5. Fairfax seeks to protect children and young people against the messages of all violent extremism including, but not restricted to, those linked to Islamist ideology, or to Far Right / Neo Nazi / White Supremacist ideology, Irish Nationalist and Loyalist paramilitary groups, and extremist Animal Rights movements
- 10.6. Risk reduction
- 10.6.1. The Academy Associate, the Head of Academy and the Designated Safeguarding Lead will assess the level of risk within the academy and put actions in place to reduce that risk. Risk assessment may include consideration of the academy's RE curriculum, SEND policy, assembly policy, the use of academy premises by external agencies, integration of students by gender and SEN, anti-bullying policy and other issues specific to the academy's profile, community and philosophy.
- 10.6.2. This risk assessment will be reviewed as part of the annual s175 return that is monitored by the local authority and the local safeguarding children board.
- 10.7. Response
- 10.7.1. Our academy, like all others, is required to identify a Prevent Single Point of Contact (SPOC) who will be the lead within the organisation for safeguarding in relation to protecting individuals from radicalisation and involvement in terrorism: this will normally be the Designated Safeguarding Lead. The SPOC for Fairfax is Mrs Sue Mulhern. The responsibilities of the SPOC are described in Appendix Five.
- 10.7.2. When any member of staff has concerns that a student may be at risk of radicalisation or involvement in terrorism, they should speak with the SPOC and to the Designated Safeguarding Lead if this is not the same person.
- 10.7.3. Numerous factors can contribute to and influence the range of behaviours that are defined as violent extremism, but most young people do not become involved in extremist action. For this reason the appropriate interventions in any particular case may not have any specific connection to the threat of radicalisation, for example they may address mental health, relationship or drug/alcohol issues.

11. SAFEGUARDING STUDENTS WHO ARE VULNERABLE TO EXPLOITATION, FORCED MARRIAGE, FEMALE GENITAL MUTILATION, OR TRAFFICKING

- 11.1. Our safeguarding policy above through the academy's values, ethos and behaviour policies provides the basic platform to ensure children and young people are given the support to respect themselves and others, stand up for themselves and protect each other.
- 11.2. Our academy keeps itself up to date on the latest advice and guidance provided to assist in addressing specific vulnerabilities and forms of exploitation.
- 11.3. Our staff are supported to recognise warning signs and symptoms in relation to specific issues include such issues in an age appropriate way in their curriculum.
- 11.4. Our staff are supported to talk to families about sensitive concerns in relation to their children and to find ways to address them together wherever possible.

APPROVED BY ACADEMY ASSOCIATION:	27/01/16	EFFECTIVE FROM:	28/01/16	NEXT REVIEW:	28/01/17
----------------------------------	----------	-----------------	----------	--------------	----------

11.5. Our Designated Safeguarding Lead knows where to seek and get advice as necessary.

12. WHAT WE DO WHEN WE ARE CONCERNED

12.1. Where risk factors are present but there is no evidence of a particular risk then our DSL /SPOC advises us on preventative work that can be done within the academy to engage the student into mainstream activities and social groups. The DSL may well be the person who talks to and has conversations with the student's family, sharing the academy's concern about the young person's vulnerability and how the family and academy can work together to reduce the risk.

12.2. In this situation, depending on how worried we are and what we agree with the parent and the young person (as far as possible

12.2.1. The DSL/SPOC can decide to notify the Multi-Agency Safeguarding Hub (MASH) of the decision so that a strategic overview can be maintained and any themes or common factors can be recognised; and

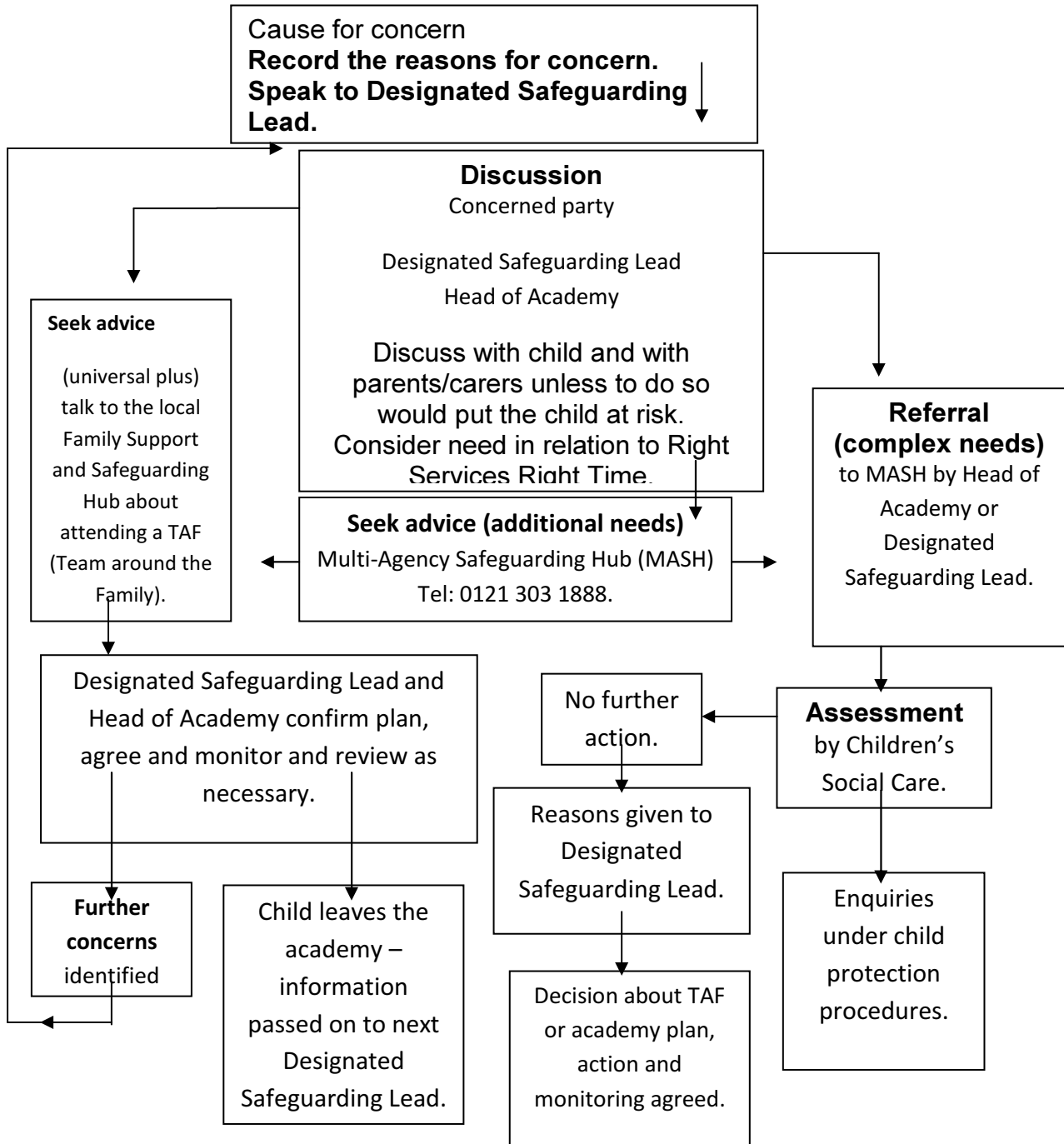
12.2.2. The academy will review the situation after taking appropriate action to address the concerns.

12.3. The DSL/SPOC will also offer and seek advice about undertaking an early help assessment such as the family Common Assessment Framework (fCAF) and/or making a referral to children's social care. The local family support and safeguarding hub can assist us.

12.4. If the concerns about the student are significant and meet the additional needs/complex need criteria, they will be referred to the MASH. This includes concerns about a child/young person who is affected by the behaviour of a parent or other adult in their household.

PART TWO – THE KEY PROCEDURES

13. RESPONDING TO CONCERNS ABOUT A CHILD



14. INVOLVING PARENTS/CARERS

14.1. In general, we will discuss any child protection concerns with parents / carers before approaching other agencies, and will seek their consent to making a referral to another agency. Appropriate staff will approach parents/carers after consultation with the Designated Safeguarding Lead. However there may be occasions when the academy will contact another agency before informing parents/carers because it considers that contacting them may increase the risk of significant harm to the child.

- 14.2. Parents/carers will be informed about our safeguarding policy through: academy prospectus & website.

15. MULTI-AGENCY WORK

- 15.1. We work in partnership with other agencies in the best interests of the children. The academy will, where necessary, liaise with the academy nurse and doctor, and make referrals to children's social care. Referrals should be made by the Designated Safeguarding Lead to the Multi-Agency Safeguarding Hub (0121 303 1888). Where the child already has a safeguarding social worker, the request for service should go immediately to the social worker involved, or in their absence to their team manager.
- 15.2. We will co-operate with any child protection enquiries conducted by children's social care: the academy will ensure representation at appropriate inter-agency meetings such as integrated support plan meetings, initial and review child protection conferences, and core group meetings.
- 15.3. We will provide reports as required for these meetings. If the academy is unable to attend, a written report will be sent. The report will, wherever possible, be shared with parents / carers at least 24 hours prior to the meeting.
- 15.4. Where a student is subject to an inter-agency child protection plan or a multi-agency risk assessment conference (MARAC) meeting, the academy will contribute to the preparation, implementation and review of the plan as appropriate.
- 15.5. Fairfax is committed to keeping our students safe, both in the academy and the wider community. As part of our safeguarding arrangements, we have a two-way information sharing agreement in place with West Midlands Police. The agreement is compliant with Crime & Disorder Act 1998 (s.115) and Data Protection Act 1998 (s.29.3; s.35.2.), and focuses on preventing young people from becoming involved or further involved in crime and anti-social behaviour as a victim or offender.

16. OUR ROLE IN SUPPORTING CHILDREN

- 16.1. We will offer appropriate support to individual children who have experienced abuse or who have abused others.
- 16.2. An individual support plan will be devised, implemented and reviewed regularly for these children. This plan will detail areas of support, who will be involved, and the child's wishes and feelings. A written outline of the individual support plan will be kept in the child's child protection record.
- 16.3. Children and young people who abuse others will be responded to in a way that meets their needs as well as protecting others within the academy community through a multi-agency risk assessment. We will ensure that the needs of children and young people who abuse others will be considered separately from the needs of their victims.
- 16.4. We will ensure the academy works in partnership with parents / carers and other agencies as appropriate

17. RESPONDING TO AN ALLEGATION ABOUT A MEMBER OF STAFF

APPROVED BY ACADEMY ASSOCIATION:	27/01/16	EFFECTIVE FROM:	28/01/16	NEXT REVIEW:	28/01/17
----------------------------------	----------	-----------------	----------	--------------	----------

See also Birmingham Safeguarding Children Board Procedures on Allegations against Staff and Volunteers.

- 17.1. This procedure should be used in any case in which it is alleged that a member of staff, associate, visiting professional or volunteer has:
- 17.1.1. Behaved in a way that has harmed a child or may have harmed a child;
 - 17.1.2. Possibly committed a criminal offence against or related to a child; or
 - 17.1.3. Behaved in a way that indicates s/he is unsuitable to work with children.
- 17.2. Although it is an uncomfortable thought, it needs to be acknowledged that there is the potential for staff in academy to abuse children.
- 17.3. All staff working within our organisation must report any potential safeguarding concerns about an individual's behaviour towards children and young people immediately. Allegations or concerns about colleagues and visitors must be reported direct to the Head of Academy unless the concern relates to Head of Academy. If the concern relates to the Head of Academy, it must be reported immediately to the Chair of Academy Associates who will discuss the concern with the Team of Designated Officers [LADO Team] in children's social care.

18. CHILDREN WITH ADDITIONAL NEEDS

- 18.1. Fairfax recognises that while all children have a right to be safe, some children may be more vulnerable to abuse, for example those with a disability or special educational need, those living with domestic violence or drug / alcohol abusing parents, etc.
- 18.2. When the academy is considering excluding, either fixed term or permanently, a vulnerable student who is the subject of a child protection plan or where there is an existing child protection file, we will call a multi-agency risk-assessment meeting prior to making the decision to exclude. In the event of a one-off serious incident resulting in an immediate decision to exclude, the risk assessment *must* be completed prior to convening a meeting of the Academy Associates.

19. CHILDREN IN SPECIFIC CIRCUMSTANCES

Guidance on children in specific circumstances is in Birmingham Safeguarding Children Board's **procedures as listed below:**

- 19.1. Abuse Linked to Spiritual Belief
- 19.2. Bullying
- 19.3. Child Sexual Exploitation
- 19.4. Children Affected by Gang Activity
- 19.5. Children and Families that Go Missing
- 19.6. Children Living away from Home
- 19.7. Children Missing from Education
- 19.8. Children of Parents who Misuse Substances
- 19.9. Children of Parents with Learning Difficulties
- 19.10. Children of Parents with Mental Health Problems
- 19.11. Disabled Children
- 19.12. Domestic Violence and Abuse
- 19.13. e-Safety – Children Exposed to Abuse through the Digital Media
- 19.14. Fabricated or Induced Illness
- 19.15. Female Genital Mutilation
- 19.16. Forced Marriage

APPROVED BY ACADEMY ASSOCIATION:	27/01/16	EFFECTIVE FROM:	28/01/16	NEXT REVIEW:	28/01/17
----------------------------------	----------	-----------------	----------	--------------	----------

- 19.17. Honour Based Violence
- 19.18. Peer Abuse – Children and Young People who Abuse Others
- 19.19. Sexually Harmful Behaviour
- 19.20. Trafficked Children
- 19.21. Underage Sexual Activity

APPENDICES

APPENDIX ONE

DEFINITIONS AND INDICATORS OF ABUSE

1. NEGLECT

Neglect is the persistent failure to meet a child's basic physical and/or psychological needs, likely to result in the serious impairment of the child's health or development. Neglect may occur during pregnancy as a result maternal substance abuse. Once a child is born, neglect may involve a parent or carer failing to:

- Provide adequate food, clothing and shelter (including exclusion from home or abandonment);
- Protect a child from physical and emotional harm or danger;
- Ensure adequate supervision (including the use of inadequate care-givers); or
- Ensure access to appropriate medical care or treatment.

It may also include neglect of, or unresponsiveness to, a child's basic emotional needs.

The following may be indicators of neglect (this is not designed to be used as a checklist):

- Constant hunger;
- Stealing, scavenging and/or hoarding food;
- Frequent tiredness or listlessness;
- Frequently dirty or unkempt;
- Often poorly or inappropriately clad for the weather;
- Poor school attendance or often late for school;
- Poor concentration;
- Affection or attention seeking behaviour;
- Illnesses or injuries that are left untreated;
- Failure to achieve developmental milestones, for example growth, weight;
- Failure to develop intellectually or socially;
- Responsibility for activity that is not age appropriate such as cooking, ironing, caring for siblings;
- The child is regularly not collected or received from school; or
- The child is left at home alone or with inappropriate carers.

2. PHYSICAL ABUSE

Physical abuse may involve hitting, shaking, throwing, poisoning, burning or scalding, drowning, suffocating or otherwise causing physical harm to a child. Physical harm may also be caused when a parent or carer fabricates the symptoms of, or deliberately induces, illness in a child.

The following may be indicators of physical abuse (this is not designed to be used as a checklist):

- Multiple bruises in clusters, or of uniform shape;
- Bruises that carry an imprint, such as a hand or a belt;

APPROVED BY ACADEMY ASSOCIATION:	27/01/16	EFFECTIVE FROM:	28/01/16	NEXT REVIEW:	28/01/17
----------------------------------	----------	-----------------	----------	--------------	----------

- Bite marks;
- Round burn marks;
- Multiple burn marks and burns on unusual areas of the body such as the back, shoulders or buttocks;
- An injury that is not consistent with the account given;
- Changing or different accounts of how an injury occurred;
- Bald patches;
- Symptoms of drug or alcohol intoxication or poisoning;
- Unaccountable covering of limbs, even in hot weather;
- Fear of going home or parents being contacted;
- Fear of medical help;
- Fear of changing for PE;
- Inexplicable fear of adults or over-compliance;
- Violence or aggression towards others including bullying; or
- Isolation from peers.

3. SEXUAL ABUSE

Sexual abuse involves forcing or enticing a child or young person to take part in sexual activities, not necessarily involving a high level of violence, whether or not the child is aware of what is happening. The activities may involve physical contact, including assault by penetration (for example, rape or oral sex) or non-penetrative acts such as masturbation, kissing, rubbing and touching outside of clothing. They may also include non-contact activities, such as involving children in looking at, or in the production of, sexual images, watching sexual activities, encouraging children to behave in sexually inappropriate ways, or grooming a child in preparation for abuse (including via the internet). Sexual abuse is not solely perpetrated by adult males. Women can also commit act of sexual abuse, as can other children.

The following may be indicators of sexual abuse (this is not designed to be used as a checklist):

- Sexually explicit play or behaviour or age-inappropriate knowledge;
- Anal or vaginal discharge, soreness or scratching;
- Reluctance to go home;
- Inability to concentrate, tiredness;
- Refusal to communicate;
- Thrush, persistent complaints of stomach disorders or pains;
- Eating disorders, for example anorexia nervosa and bulimia;
- Attention seeking behaviour, self-mutilation, substance abuse;
- Aggressive behaviour including sexual harassment or molestation;
- Unusual compliance;
- Regressive behaviour, enuresis, soiling;
- Frequent or open masturbation, touching others inappropriately;
- Depression, withdrawal, isolation from peer group;
- Reluctance to undress for PE or swimming; or
- Bruises or scratches in the genital area.

4. SEXUAL EXPLOITATION

Child sexual exploitation occurs when a child or young person, or another person, receives “something” (for example food, accommodation, drugs, alcohol, cigarettes, affection, gifts, money)

APPROVED BY ACADEMY ASSOCIATION:	27/01/16	EFFECTIVE FROM:	28/01/16	NEXT REVIEW:	28/01/17
----------------------------------	----------	-----------------	----------	--------------	----------

as a result of the child/young person performing sexual activities, or another person performing sexual activities on the child/young person.

The presence of any significant indicator for sexual exploitation should trigger a referral to children's social care. The significant indicators are:

- Having a relationship of concern with a controlling adult or young person (this may involve physical and/or emotional abuse and/or gang activity);
- Entering and/or leaving vehicles driven by unknown adults;
- Possessing unexplained amounts of money, expensive clothes or other items;
- Frequenting areas known for risky activities;
- Being groomed or abused via the Internet and mobile technology; and
- Having unexplained contact with hotels, taxi companies or fast food outlets.

5. EMOTIONAL ABUSE

Emotional abuse is the persistent emotional maltreatment of a child such as to cause severe and persistent adverse effects on the child's emotional development. It may involve conveying to children that they are worthless or unloved, inadequate, or valued only insofar as they meet the needs of another person. It may include not giving the child opportunities to express their views, deliberately silencing them or 'making fun' of what they say or how they communicate. It may feature age or developmentally inappropriate expectations being imposed on children. These may include interactions that are beyond the child's developmental capability, as well as overprotection and limitation of exploration and learning, or preventing the child participating in normal social interaction. It may also involve seeing or hearing the ill-treatment of another person. It may involve serious bullying (including cyber bullying), causing children frequently to feel frightened or in danger, or the exploitation or corruption of children. Some level of emotional abuse is involved in all types of maltreatment.

The following may be indicators of emotional abuse (this is not designed to be used as a checklist):

- The child consistently describes him/herself in very negative ways – as stupid, naughty, hopeless, ugly;
- Over-reaction to mistakes;
- Delayed physical, mental or emotional development;
- Sudden speech or sensory disorders;
- Inappropriate emotional responses, fantasies;
- Neurotic behaviour: rocking, banging head, regression, tics and twitches;
- Self harming, drug or solvent abuse;
- Fear of parents being contacted;
- Running away;
- Compulsive stealing;
- Appetite disorders - anorexia nervosa, bulimia; or
- Soiling, smearing faeces, enuresis.

N.B.: Some situations where children stop communication suddenly (known as "traumatic mutism") can indicate maltreatment.

6. RESPONSES FROM PARENTS

Research and experience indicates that the following responses from parents may suggest a cause for concern across all four categories:

APPROVED BY ACADEMY ASSOCIATION:	27/01/16	EFFECTIVE FROM:	28/01/16	NEXT REVIEW:	28/01/17
----------------------------------	----------	-----------------	----------	--------------	----------

- Delay in seeking treatment that is obviously needed;
- Unawareness or denial of any injury, pain or loss of function (for example, a fractured limb);
- Incompatible explanations offered, several different explanations or the child is said to have acted in a way that is inappropriate to her/his age and development;
- Reluctance to give information or failure to mention other known relevant injuries;
- Frequent presentation of minor injuries;
- A persistently negative attitude towards the child;
- Unrealistic expectations or constant complaints about the child;
- Alcohol misuse or other drug/substance misuse;
- Parents request removal of the child from home; or
- Violence between adults in the household.

7. DISABLED CHILDREN

When working with children with disabilities, practitioners need to be aware that additional possible indicators of abuse and/or neglect may also include:

- A bruise in a site that might not be of concern on an ambulant child such as the shin, might be of concern on a non-mobile child;
- Not getting enough help with feeding leading to malnourishment;
- Poor toileting arrangements;
- Lack of stimulation;
- Unjustified and/or excessive use of restraint;
- Rough handling, extreme behaviour modification such as deprivation of medication, food or clothing, disabling wheelchair batteries;
- Unwillingness to try to learn a child's means of communication;
- Ill-fitting equipment, for example callipers, sleep boards, inappropriate splinting;
- Misappropriation of a child's finances; or
- Inappropriate invasive procedures.

**APPENDIX TWO
DEALING WITH A DISCLOSURE OF ABUSE**

When a child tells me about abuse s/he has suffered, what must I remember?

- Stay calm.
- Do not communicate shock, anger or embarrassment.
- Reassure the child. Tell her/him you are pleased that s/he is speaking to you.
- Never enter into a pact of secrecy with the child. Assure her/him that you will try to help but let the child know that you will have to tell other people in order to do this. State who this will be and why.
- Tell her/him that you believe them. Children very rarely lie about abuse; but s/he may have tried to tell others and not been heard or believed.
- Tell the child that it is not her/his fault.
- Encourage the child to talk but do not ask "leading questions" or press for information.
- Listen and remember.
- Check that you have understood correctly what the child is trying to tell you.
- Praise the child for telling you. Communicate that s/he has a right to be safe and protected.
- Do not tell the child that what s/he experienced is dirty, naughty or bad.
- It is inappropriate to make any comments about the alleged offender.
- Be aware that the child may retract what s/he has told you. It is essential to record all you have heard.
- At the end of the conversation, tell the child again who you are going to tell and why that person or those people need to know.
- As soon as you can afterwards, make a detailed record of the conversation using the child's own language. Include any questions you may have asked. Do not add any opinions or interpretations.

NB It is not education staff's role to seek disclosures. Their role is to observe that something may be wrong, ask about it, listen, be available and try to make time to talk.

Immediately afterwards

You must not deal with this yourself. Clear indications or disclosure of abuse must be reported to children's social care without delay, by the Designated Safeguarding Lead. In the absence of the DSL Sue Mulhern please report to Mrs Liz Beattie, Mrs Claire Barker or any member of the Leadership Team. If you are unable to contact any of the above you **must** refer to the MASH team yourself in order to safeguard the child on 0121 303 1888

Children making a disclosure may do so with difficulty, having chosen carefully to whom they will speak. Listening to and supporting a child/young person who has been abused can be traumatic for the adults involved. Support for you will be available from your Designated Safeguarding Lead or Head of Academy.

APPENDIX THREE

ALLEGATIONS ABOUT A MEMBER OF STAFF, ASSOCIATE OR VOLUNTEER

1. Inappropriate behaviour by staff/volunteers could take the following forms:
 - **Physical**
For example the intentional use of force as a punishment, slapping, use of objects to hit with, throwing objects or rough physical handling.
 - **Emotional**
For example intimidation, belittling, scapegoating, sarcasm, lack of respect for children's rights, and attitudes that discriminate on the grounds of race, gender, disability or sexuality.
 - **Sexual**
For example sexualised behaviour towards students, sexual harassment, sexual assault and rape.
 - **Neglect**
For example failing to act to protect a child or children, failing to seek medical attention or failure to carry out an appropriate risk assessment.

2. If a child makes an allegation about a member of staff, associate, visitor or volunteer the Head of Academy should be informed immediately. The Head of Academy should carry out an urgent initial consideration in order to establish whether there is substance to the allegation. The Head of Academy should not carry out the investigation herself/himself or interview students.

3. The Head of Academy must exercise, and be accountable for, their professional judgement on the action to be taken, as follows –
 - If the actions of the member of staff, and the consequences of the actions, raise credible child protection concerns the Head of Academy will notify the Team of Designated Officers (LADO) Team (Tel: 0121 675 1669). The Team of Designated Officers [LADO] will liaise with the Head of Academy and advise about action to be taken, and may initiate internal referrals within children's social care to address the needs of children likely to have been affected.
 - If the actions of the member of staff, and the consequences of the actions, do not raise credible child protection concerns, but do raise other issues in relation to the conduct of the member of staff or the student(s), these should be addressed through the school's own internal procedures.
 - If the Head of Academy decides that the allegation is without foundation and no further formal action is necessary, all those involved should be informed of this conclusion, and the reasons for the decision should be recorded on the child protection file.

4. Where an allegation has been made against the Head of Academy, then the Chair of the Academy Association takes on the role of liaising with the LADO team in determining the appropriate way forward. For details of this specific procedure see the Section on Allegations against Staff and Volunteers in the procedures of Birmingham Safeguarding Children Board.

APPROVED BY ACADEMY ASSOCIATION:	27/01/16	EFFECTIVE FROM:	28/01/16	NEXT REVIEW:	28/01/17
----------------------------------	----------	-----------------	----------	--------------	----------

APPENDIX FOUR

INDICATORS OF VULNERABILITY TO RADICALISATION

1. Radicalisation refers to the process by which a person comes to support terrorism and forms of extremism leading to terrorism.
2. Extremism is defined by the Government in the Prevent Strategy as:
Vocal or active opposition to fundamental British values, including democracy, the rule of law, individual liberty and mutual respect and tolerance of different faiths and beliefs. We also include in our definition of extremism calls for the death of members of our armed forces, whether in this country or overseas.
3. Extremism is defined by the Crown Prosecution Service as:
The demonstration of unacceptable behaviour by using any means or medium to express views which:
 - Encourage, justify or glorify terrorist violence in furtherance of particular beliefs;
 - Seek to provoke others to terrorist acts;
 - Encourage other serious criminal activity or seek to provoke others to serious criminal acts; or
 - Foster hatred which might lead to inter-community violence in the UK.
4. There is no such thing as a "typical extremist": those who become involved in extremist actions come from a range of backgrounds and experiences, and most individuals, even those who hold radical views, do not become involved in violent extremist activity.
5. Students may become susceptible to radicalisation through a range of social, personal and environmental factors - it is known that violent extremists exploit vulnerabilities in individuals to drive a wedge between them and their families and communities. It is vital that school staff are able to recognise those vulnerabilities.
6. Indicators of vulnerability include:
 - Identity Crisis – the student is distanced from their cultural/religious heritage and experiences discomfort about their place in society;
 - Personal Crisis – the student may be experiencing family tensions; a sense of isolation; and low self-esteem; they may have dissociated from their existing friendship group and become involved with a new and different group of friends; they may be searching for answers to questions about identity, faith and belonging;
 - Personal Circumstances – migration; local community tensions; and events affecting the student's country or region of origin may contribute to a sense of grievance that is triggered by personal experience of racism or discrimination or aspects of Government policy;
 - Unmet Aspirations – the student may have perceptions of injustice; a feeling of failure; rejection of civic life;
 - Experiences of Criminality – which may include involvement with criminal groups, imprisonment, and poor resettlement / reintegration;
 - Special Educational Need – students may experience difficulties with social interaction, empathy with others, understanding the consequences of their actions and awareness of the motivations of others.

7. However, this list is not exhaustive, nor does it mean that all young people experiencing the above are at risk of radicalisation for the purposes of violent extremism.
8. More critical risk factors could include:
 - Being in contact with extremist recruiters;
 - Accessing violent extremist websites, especially those with a social networking element;
 - Possessing or accessing violent extremist literature;
 - Using extremist narratives and a global ideology to explain personal disadvantage;
 - Justifying the use of violence to solve societal issues;
 - Joining or seeking to join extremist organisations; and
- Significant changes to appearance and / or behaviour;
- Experiencing a high level of social isolation resulting in issues of identity crisis and / or personal crisis.

**APPENDIX FIVE
PREVENTING VIOLENT EXTREMISM -
ROLES AND RESPONSIBILITIES OF THE SINGLE POINT OF CONTACT (SPOC)**

The SPOC for Fairfax Academy is Mrs Sue Mulhern, who is responsible for:

- Ensuring that staff of the school are aware that you are the SPOC in relation to protecting students from radicalisation and involvement in terrorism;
- Maintaining and applying a good understanding of the relevant guidance in relation to preventing students from becoming involved in terrorism, and protecting them from radicalisation by those who support terrorism or forms of extremism which lead to terrorism;
- Raising awareness about the role and responsibilities of Fairfax Academy in relation to protecting students from radicalisation and involvement in terrorism;
- Monitoring the effect in practice of the school's RE curriculum and assembly policy to ensure that they are used to promote community cohesion and tolerance of different faiths and beliefs;
- Raising awareness within the school about the safeguarding processes relating to protecting students from radicalisation and involvement in terrorism;
- Acting as the first point of contact within the school for case discussions relating to students who may be at risk of radicalisation or involved in terrorism;
- Collating relevant information in relation to referrals of vulnerable students into the Channel* process;
- Attending Channel* meetings as necessary and carrying out any actions as agreed;
- Reporting progress on actions to the Channel* Co-ordinator; and
- Sharing any relevant additional information in a timely manner.

* Channel is a multi-agency approach to provide support to individuals who are at risk of being drawn into terrorist related activity. It is led by the West Midlands Police Counter-Terrorism Unit, and it aims to:

- Establish an effective multi-agency referral and intervention process to identify vulnerable individuals;
- Safeguard individuals who might be vulnerable to being radicalised, so that they are not at risk of being drawn into terrorist-related activity; and
- Provide early intervention to protect and divert people away from the risks they face and reduce vulnerability.

This document also link to the following policies:

[Intimate Care Policy](#)

[Behaviour Policy](#)

[e-Safety Policy](#)

[Acceptable Use of ICT Policy](#)

[Child Protection Policy](#)

[Special Educational Needs and Disabilities Policy](#)

[Attendance Policy](#)

Glossary

CAF Common Assessment Framework

TAF Team Around the Family

MASH Multi Agency Safeguarding Hub